



PRECIPART

Engineered Solutions

High Precision Machined Parts

Equipment and Manufacturing Technology:
Swiss-type Automatic Machines
Multi Spindle Swiss CNC Machines
High-Speed Coil Fed Automatic Machines
CNC Machines with Sub-spindles and Live Tooling
Rotary Transfer Machines
Conventional Turning Stations
CNC 4 Axis Horizontal Milling
CNC 5 Axis Milling Centers
CNC 3 & 4 Axis Vertical Milling Centers
Robotic Manufacturing & Machining Cells

Material:
Titanium, Stainless Steel, Bronze, Brass, Carbon Steel, Aluminum
Specialty Alloys, Tungsten, Precious Metal (e.g. Gold, Platinum, Palladium)
Tungsten, Plastics (e.g. Radel, Peek)

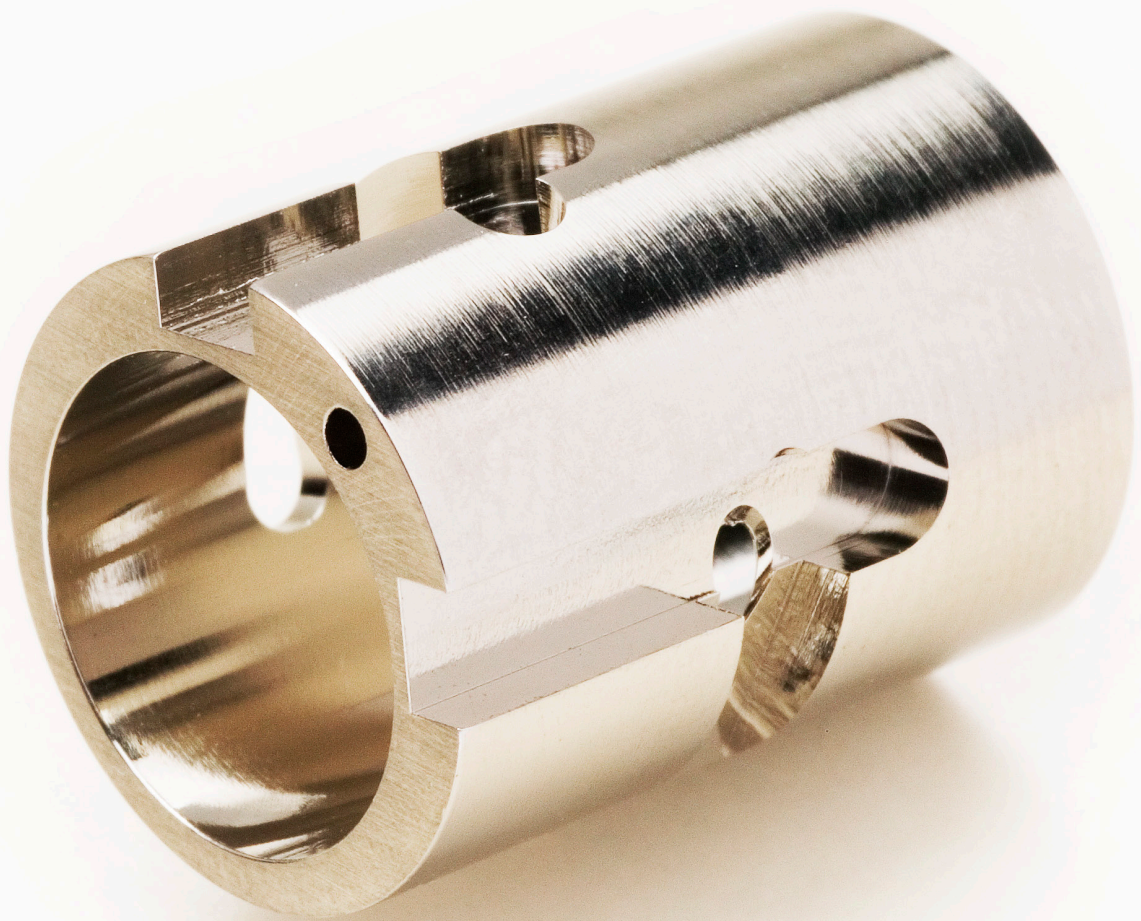
Complementary Manufacturing Capability:
CNC Laser Welding, Cutting, Etching and Marking
Honing: Vertical and Horizontal
Grinding: OD, ID, Form & Centerless, CNC
Heat Treating: Annealing, Controlled Atmosphere, Tempering, Case Hardening
Deburring: Micro Bead, Grit Blasting, Automated CNC handling, Thermal, Chemical
EDM Processing, EB and Resistance Welding
Part Serializing and Color Identification
Plastic Molding and Assembly Operations
Bending, Cold Forming, Wire Forming
Drilling, Slotting, Threading, Tapping, Knurling

Surface Treatments:
Polishing, Tumbling, Electro Polishing, Cosmetic Finishing
Anodizing, Titanium Nitride, Precious Metal Coating, Nickel, Electroless Nickel, Chrome, Black Oxide and Zinc
Citric and Nitric Passivation, Aqueous and Organic based cleaning, Micro-abrasion

Approximate size ranges from 0.011" (0.3mm) up to 1.65" (42mm) diameters and lengths up to 25" (635mm) and more depending on application.

Customized packaging options, bar coding, kitting and inventory stocking

Medical Machined Components



PRECIPART

Enhancing lives through innovative solutions.SM



www.precipart.com

USA +631 694 5900 | Switzerland +41 32 366 6141 | UK +44 1425 476756

DENTAL
ENDOSCOPY
ORTHOPEDIC
CARDIOLOGY
OPHTHALMOLOGY
NEUROLOGY
SURGICAL
INSTRUMENTS
LAPAROSCOPY
ARTHROSCOPY
VASCULAR



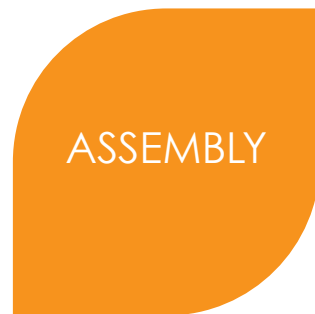
TIGHT
TOLERANCES



COMPLEX
DESIGNS



THINK BIG
ENGINEER
SMALL



ASSEMBLY



BENEFITS OF PRECISION MACHINING

- Flexibility and manufacturing optimization
- High volume production of complex components
- Ability to maintain demanding tolerance requirements
- Broad selection of material options
- Validated and secure processes

DESIGN AND ENGINEERING SUPPORT

- Turnkey support from design through production
- Comprehensive assessment with a focus on manufacturability
- Prototyping, evaluation, validation and production optimization
- Review & feasibility studies
- Expertise in micro and miniature components
- Material selection, secondary finishes, tolerancing
- Precision designs for accurate and repeatable results

QUALITY SYSTEMS AND MANAGEMENT

- Risk Management for product realization
- Capacity and Correlation Studies, Gauge R&R's, SPC Data Support, FMEAs
- Process Validation, Independent Testing and Certification Services
- Device Master Records, FAIR documentation and PPAPs
- Preventative Maintenance and Continuous Improvement
- ISO Class 8 Clean Room, fully validated clean room, packaging and cleaning

ISO 13485 ISO 9001 ROHS CTPAT REACH